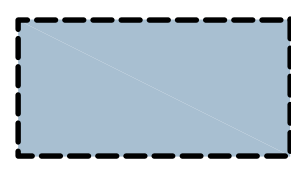
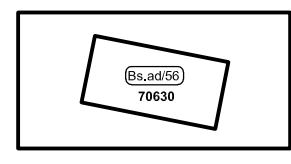
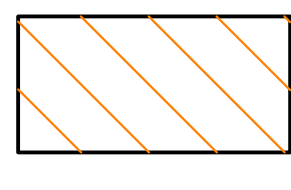
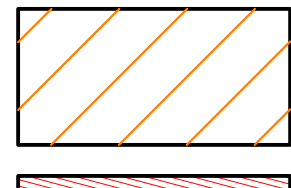
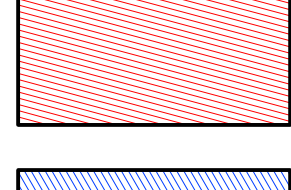
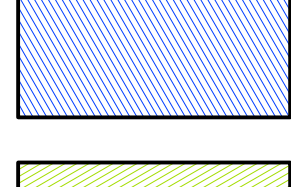

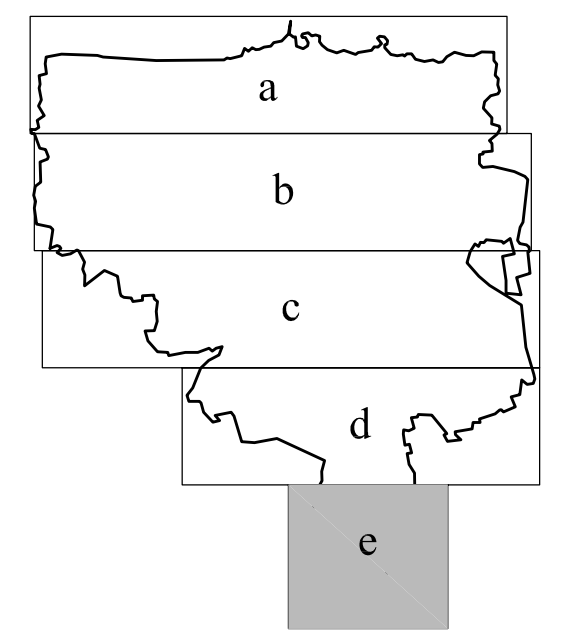


-  TERRITORI COSTRUITI - Titolo I, art.1.03, punto 5 - PUTT/Paesaggio
-  AREE TIPIZZATE PUG - Elaborati serie 11

PUTT/P - REGIONE PUGLIA
 ATLANTI DELLA DOCUMENTAZIONE CARTOGRAFICA
 AMBITI TERRITORIALI ESTESI

-  ZONA AGRICOLA E1 - ATE E
-  ZONA AGRICOLA E2 - ATE E
-  ZONA AGRICOLA E3 - ATE A
-  ZONA AGRICOLA E4 - ATE C
-  ZONA AGRICOLA E5 - ATE D

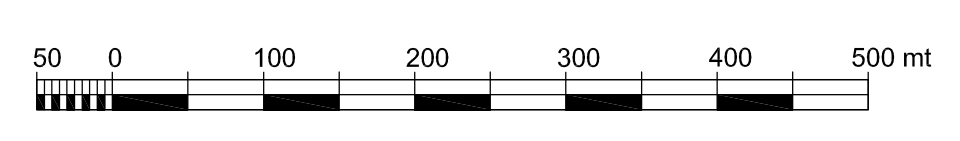


CITTA' DI TRANI
PIANO URBANISTICO GENERALE
legge regionale n. 20/2001

tav. 8.2/e
 Tutele sovracomunali: ATE
 rapp. 1:5000

Adeguito a:
 Delibera Consiglio Comunale 26.07.2006 n.29
 Delibera Consiglio Comunale 21.12.2007 n.109
 Delibera Giunta Regionale 01.08.2008 n.1480
 "Conferenza di Servizi" del 17.09.2008 e succ.

Studio Associato Fuzio



COMUNE
 DI
 ANDRIA

COMUNE
 DI
 CORATO

COMUNE
 DI
 CORATO

COMUNE
 DI
 ANDRIA

